



Solon Road, Brixton, SW2

4 bedroom house for sale

£925,000

Freehold

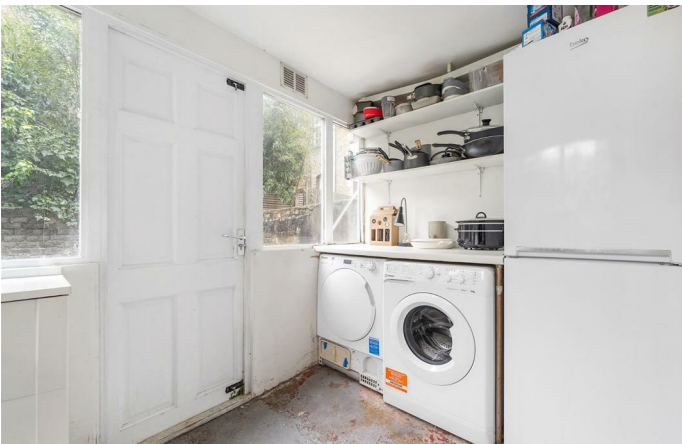
Property Details

An exciting blank canvas, this four double bedroom, two bathroom Victorian house offers generous, flexible accommodation over three floors. Currently arranged as a five-bedroom home, it provides excellent scope to redecorate, reconfigure or extend. To the front, the first reception is presently used as a spacious double bedroom, featuring high ceilings, a bay window and original wooden floorboards, easily reinstated as an elegant reception room. Adjacent, the second reception boasts comicing, exposed floorboards and direct garden access, with potential to create a superb through-lounge by combining the two. The kitchen diner spans the rear, fitted with contemporary neutral cabinetry and ample space for a large dining table. A separate utility room and downstairs WC add practicality. The walled garden, with attractive stained glass window views, offers potential for landscaping. Upstairs are four double bedrooms and two bathrooms, one with a separate WC. Precedent exists to extend into the loft and/or side return, subject to permissions.

Features

- Four double bedrooms
- Two bathrooms
- Private garden
- Victorian house
- Potential to extend STNP
- Clapham High street just a six-minute stroll
- Brixton centre a twelve-minute walk
- Victoria and Northern tube lines
- Freehold
- Chain-free

Council tax band E EPC rating D (65)





Solon Road, Brixton, SW2

Solon Road, SW2
4 Bedroom House

APPROXIMATE GROSS INTERNAL AREA WITH CELLAR: **1572 SQ FT / 146 SQ M**
 APPROXIMATE GROSS INTERNAL AREA WITHOUT CELLAR: **1469 SQ FT / 136.5 SQ M**



While we try our very best, floor plans are produced as a guide only and we take no responsibility for the precise accuracy with which any property is represented.

Solon Road, Brixton, SW2

